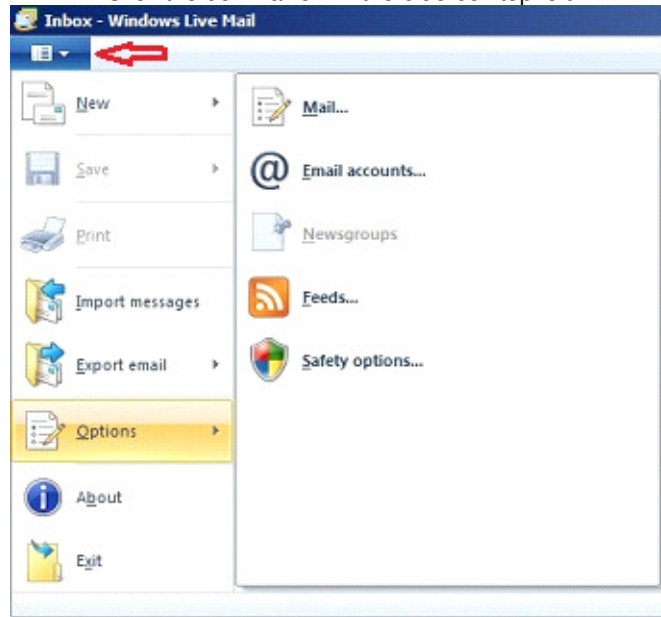
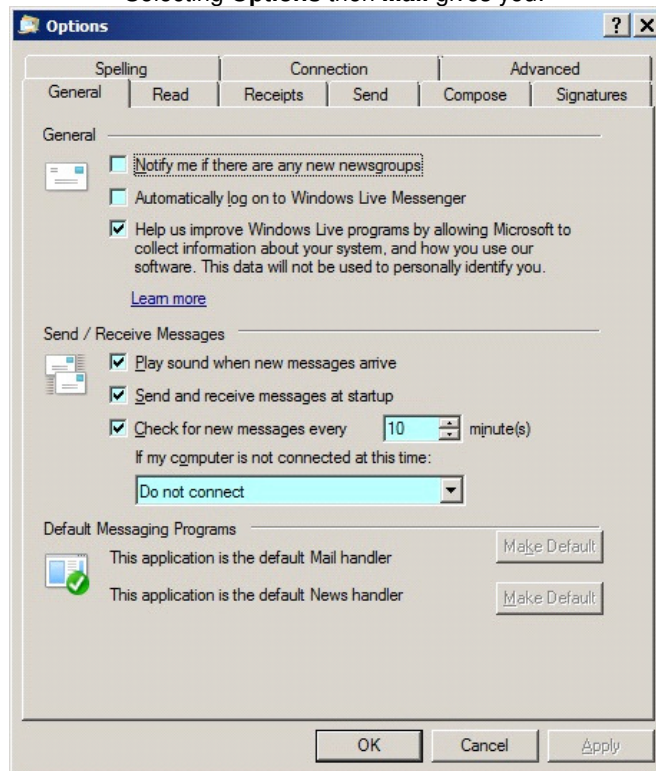


## Windows Live Mail Options

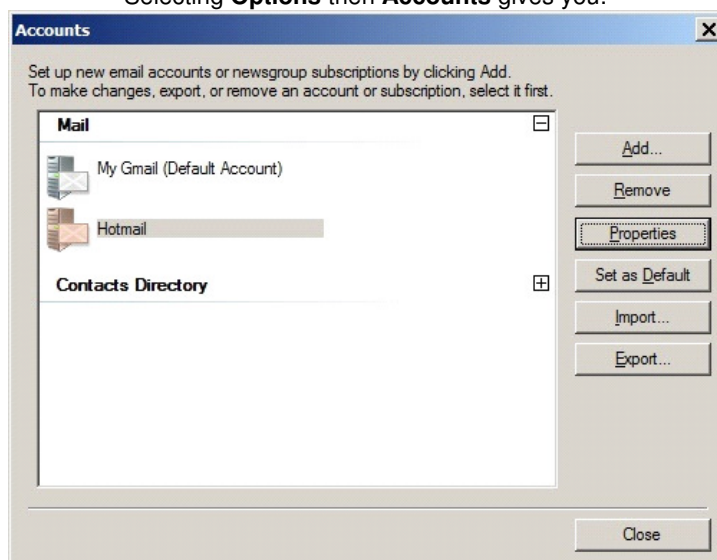
Click the down arrow in the blue box top left.



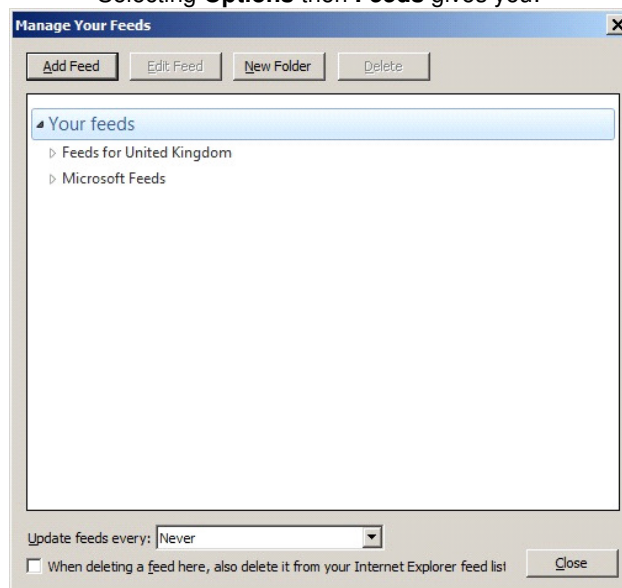
Selecting **Options** then **Mail** gives you:-



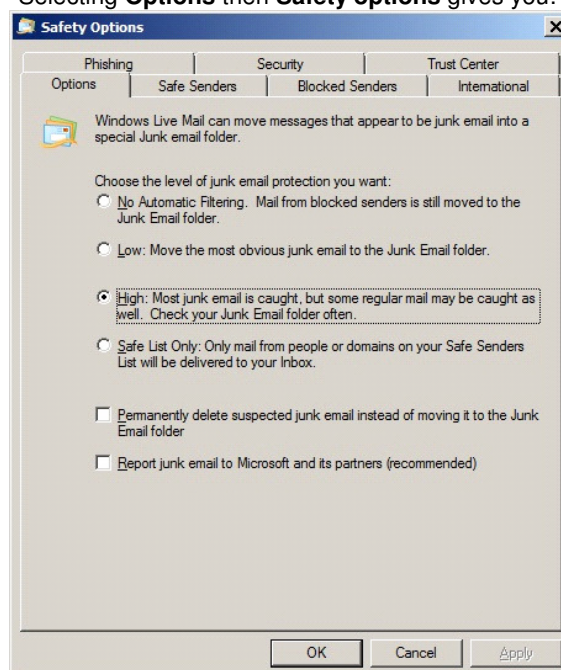
Selecting **Options** then **Accounts** gives you:-



Selecting **Options** then **Feeds** gives you:-



Selecting **Options** then **Safety options** gives you:-



**If you need help about any of the above, feel free to ask.**

Compliments of

